

TINA BUNKER
Green Bay's
Real Estate Professional

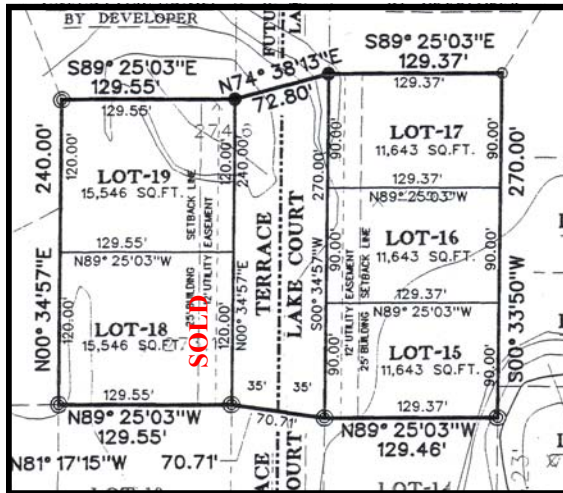


Work: 920-965-1020
 Mobile: 920-619-9028
 Fax: 920-965-1022
 Email: tinab@new.rr.com
 Web: www.tinabunker.com

WOODLAND PARK

TERRACE LAKE COURT LOTS

SOUTHEAST
 AREA 102



Lot 15 \$69,900
Lot 16 \$69,900
Lot 17 \$69,900
Lot 18 SOLD
Lot 19 \$79,900

PROPERTY REMARKS: Wonderful wooded lots in an area of fine homes. You will enjoy the park-like and private setting these lots offer. Call today for more information, including restrictive covenants.

PROPERTY LOCATION: East Mason, North on Ontario, East on Finger, North on Welland, East on Avalanche, North on Terrace Lake

OTHER PROPERTY INFORMATION

Lot Size.....	See Plat above	Municipality.....	Green Bay
Property Tax/Year	TBD	Schools	Baird Red Smith Preble
Natural Gas to Site	Yes	Use Restrictions	Yes
Electricity to Site.....	Yes	Current Zoning.....	Residential
Sanitary Sewer.....	Yes	Sidewalks.....	None
Sewer (Lateral).....	Yes	Street Surface.....	asphalt
Private Septic	No	Curb & Gutter	Yes
Perc Test Data	No	Wooded	Yes, Partially
Storm Sewer	Yes	Wetland	No
Sewer (Lateral).....	Yes	Shoreland	No
Public Water.....	Yes	Water Frontage.....	No
Water (Lateral).....	Yes	Flood Plain.....	No
Survey Available	Yes		
Easements	Yes		

*Information herein is not warranted and is subject to change without notice. We assume no liability for errors. Lot size and/or dimensions were obtained from public records and may not be accurate. Accurate boundary lines and lot size can only be determined if a plat of survey is obtained. (Printed 02/12/08) Supersedes any previous publications. School boundaries can change without notice please see <http://www.greenbay.k12.wi.us> for verification or contact the Green Bay Public School District at 920-448-2000.